

# DRYFT<sup>®</sup>

## Squeegee Options



Watch video

Your guide to find the **most suitable squeegee** for your floor type.



# Which *DRYFT*® Squeegee is right for my floor?

Choosing the right DRYFT squeegee depends on your floor type and environment, we have 4 options available:



## Smooth Floor Linatex Squeegee



Chemical and abrasion resistant  
\*Not suitable in oily or greasy environments.



### Smooth Flooring Texture less than 1mm

Linatex is made from **95% natural rubber**, best for **smooth, flat surfaces with texture less than 1mm**. Offers the least drag, making the machine easy to manoeuvre - perfect for vinyl, laminate, polished concrete, and rubber flooring.

SKU 200-S06



## Uneven Floor Linatex Squeegee



Chemical and abrasion resistant  
\*Not suitable in oily or greasy environments.



### Uneven Flooring Texture or grout lines over 1mm deep

Linatex is made from **95% natural rubber**, this squeegee is designed for **deep texture or heavy grout lines deeper than 1mm**. The taller, more flexible design flexes into uneven surfaces for superior drying - ideal for slate, small ceramic tiles, and surfaces with wide grout lines.  
Note: May cause more drag on high-friction surfaces like vinyl.

SKU 200-S26



## Smooth Floor Primothane Squeegee



Grease and oil resistant



### Smooth Flooring Texture less than 1mm

Primothane is made from polyurethane, built for **greasy or oily environments such as commercial kitchens, fast food restaurants, and workshops**. This squeegee delivers extended durability in harsh conditions where standard materials degrade.

SKU 200-S25



## Uneven Floor Primothane Squeegee



Grease and oil resistant



### Uneven Flooring Texture or grout lines over 1mm deep

Primothane is made from polyurethane, built for **greasy or oily environments such as commercial kitchens, fast food restaurants, and workshops**. This squeegee delivers extended durability in harsh conditions where standard materials degrade.

SKU 200-S27





## Smooth Floor Linatex Squeegee



Chemical and abrasion resistant  
\*Not suitable in oily or greasy environments.



### Effortless drying on smooth surfaces

The **DRYFT Smooth Floor Squeegee** is precision-engineered for maximum performance on smooth flooring with surface textures less than 1mm. Its design delivers ultra-low drag, ensuring seamless manoeuvrability - even on high-friction surfaces like vinyl, laminate, and rubber.

The **Smooth Floor, Linatex Squeegee** is ideal for the following floor types:



Sheet Vinyl Floors



Marble Floors



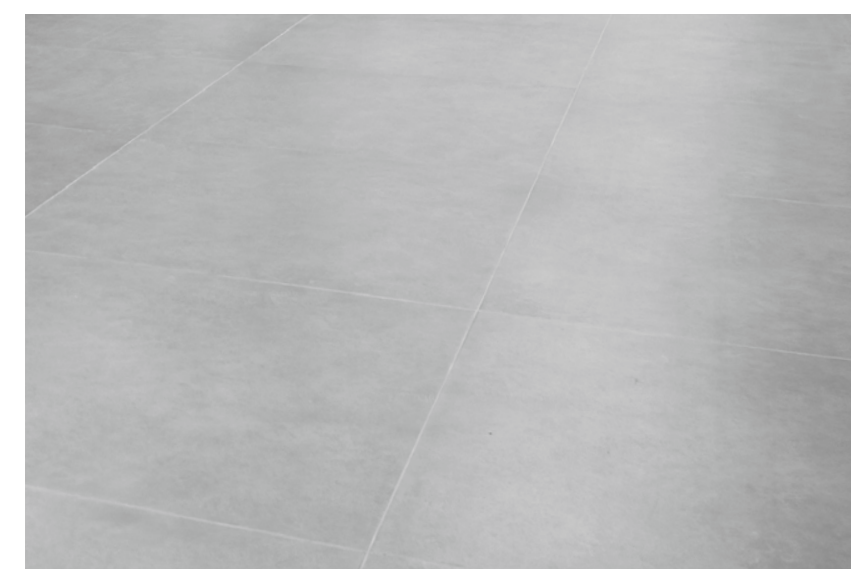
LVT Vinyl Floors (with light texture)



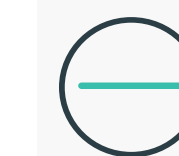
Smooth Rubber Floors



Terrazzo



Ceramic Tiles



Smooth Floor Linatex  
SKU 200-S06

### Other suitable floor types:

- Altro Safety Floors
- Laminate flooring
- Polished concrete
- Epoxy-coated floors
- Sealed wood (where suitable)
- Smooth stone or tile with minimal grout recess





# Uneven Floor Linatex Squeegee



Chemical and abrasion resistant  
\*Not suitable in oily or greasy environments.



## Advanced drying for textured and grouted surfaces

The **DRYFT Uneven Floor Squeegee** is purpose-built to handle challenging surfaces with deep texture and heavy grout lines.

**Designed for deep texture and grout**  
The 1.2mm taller design allows the squeegee to reach into surface irregularities greater than 1mm, ensuring thorough water recovery even on heavily textured floors.

### Outstanding performance on uneven floors

Ideal for uneven ceramic tiles, slate, and small-format tiles with wide or deep grout lines. Whether it's a rustic finish or a heavily grouted commercial tile layout, this squeegee handles it with ease.

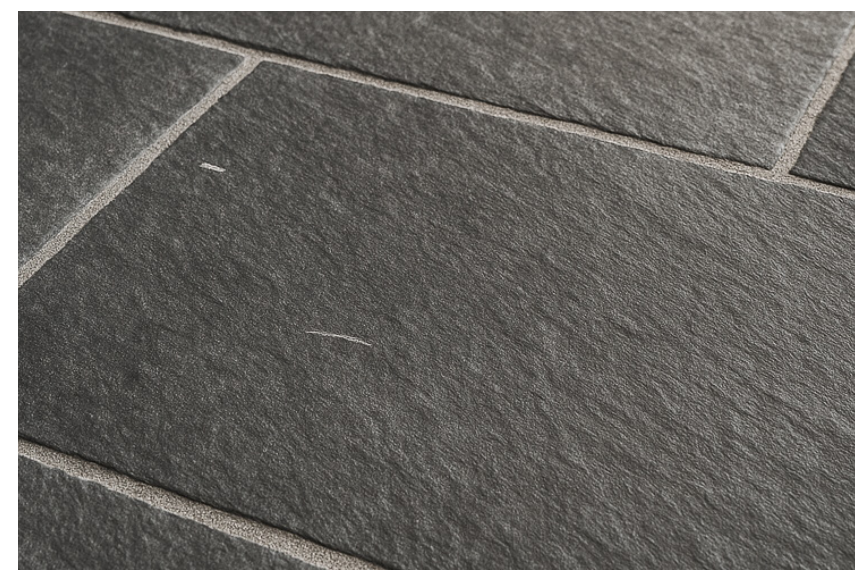
### Friction-matched flexibility

On low-friction surfaces like ceramic and stone, the squeegee glides with minimal resistance. On high-friction floors such as vinyl or rubber, increased drag may be experienced due to deeper contact - making this squeegee best suited for harder, smoother-feel materials with uneven profiles.

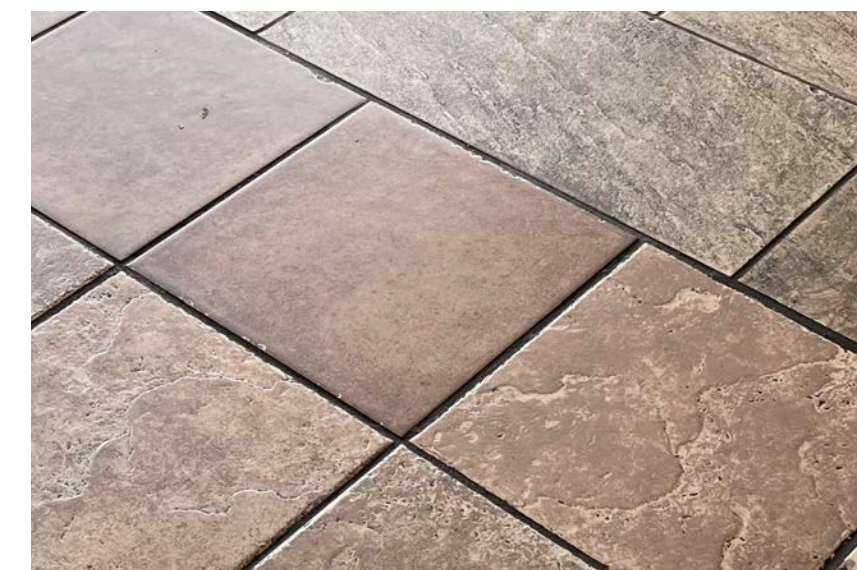
The **Uneven Floor, Linatex Squeegee** is ideal for the following floor types:



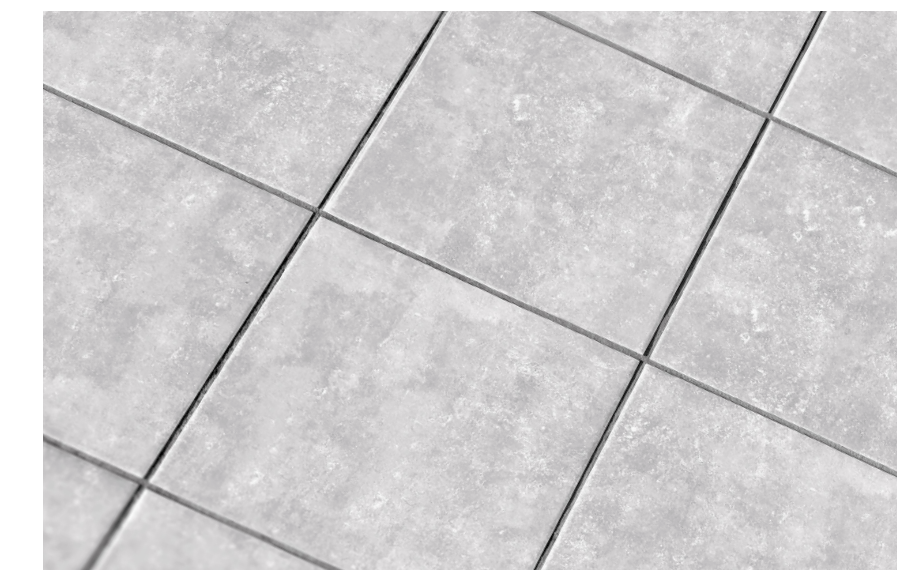
**Small Ceramic Tiles**



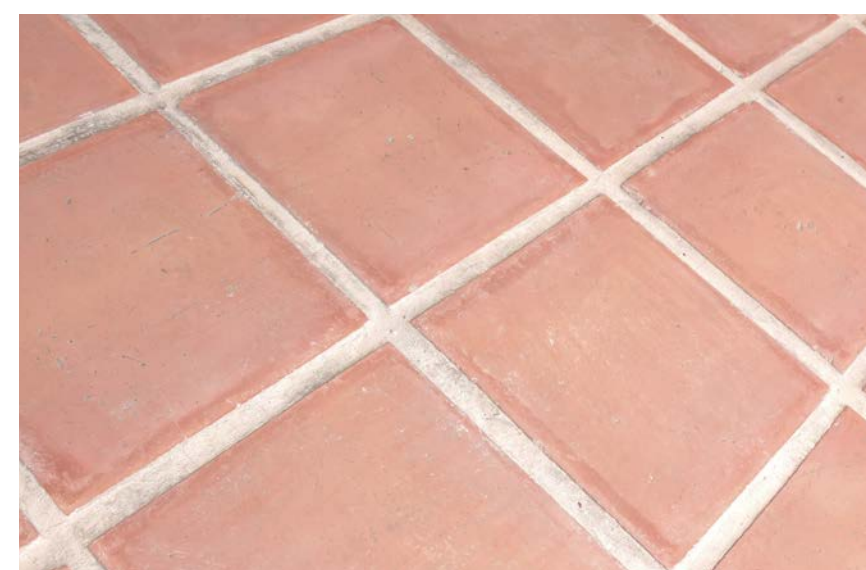
**Slate and Natural Stone**



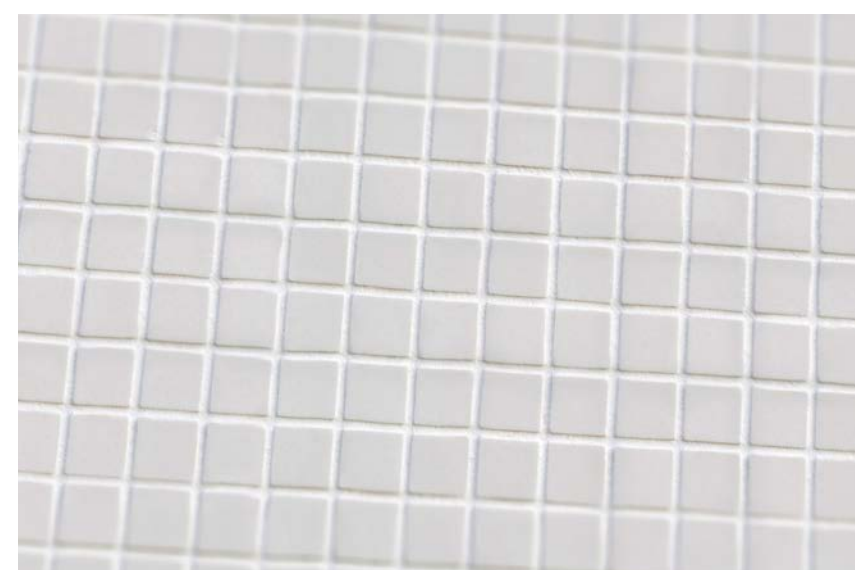
**Textured Ceramic Tiles**



**Texture Non Slip Ceramic Tiles**



**Deep Grout Lines**



**Extensive Grout Lines**



**Washroom areas**

## Other suitable floor types:

- Deep-textured ceramic tiles
- Surfaces with wide or deep grout spacing
- Uneven or irregular hard floor finishes

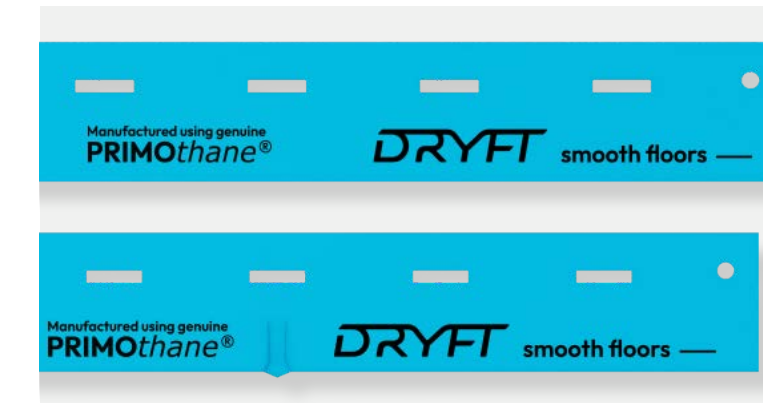




# Smooth and Uneven Floors Primothane Squeegee



Grease and oil resistant



## Extended life in greasy and oily environments

Specially developed for demanding environments, the DRYFT **Primothane Floor Squeegee** delivers exceptional durability and performance on greasy, oily floors. Whether you're cleaning busy kitchens or industrial workshops, Primothane ensures consistent drying power where others degrade.

### Engineered for grease resistance

The Primothane blend resists swelling, softening, and breakdown caused by exposure to oils and fats, making it the ideal squeegee for food service and industrial applications.

### Extended service life

Designed to outlast standard squeegees in harsh environments, Primothane keeps going strong where traditional materials fail - reducing downtime and replacement costs.

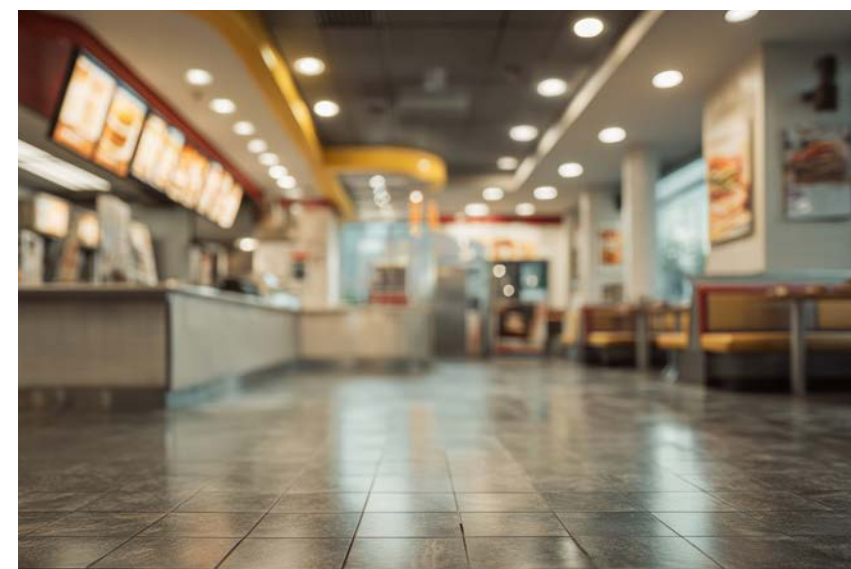
### Perfect for commercial and industrial settings

Ideal for fast-paced facilities where grease, oils, and solvents are present, ensuring dependable drying without compromise.

The **Uneven Floor and Smooth Floor Primothane Squeegee** is ideal for the following environments:



Commercial kitchens



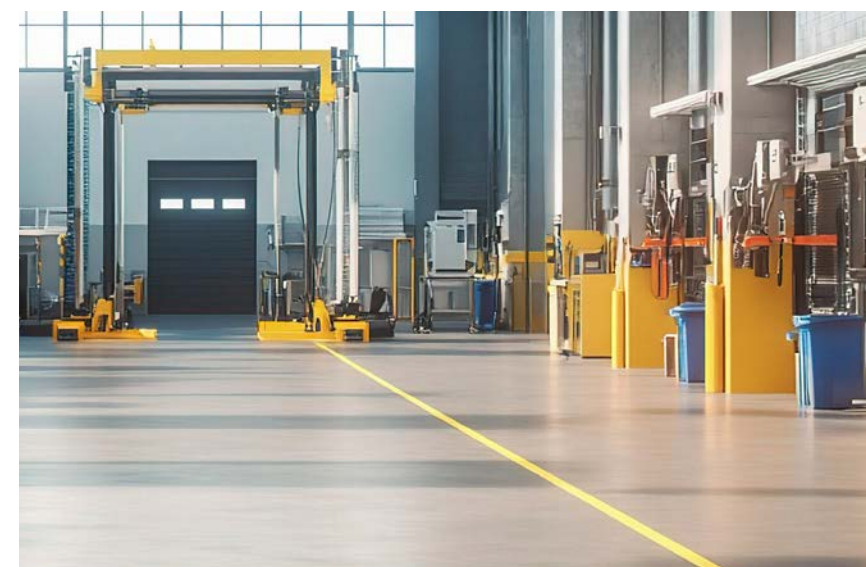
Fast food restaurants



Industrial workshops



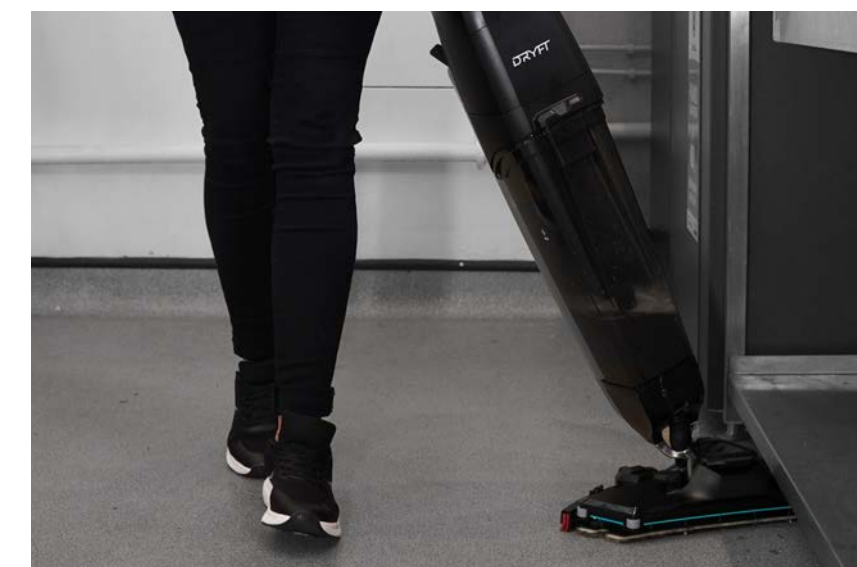
Manufacturing floors



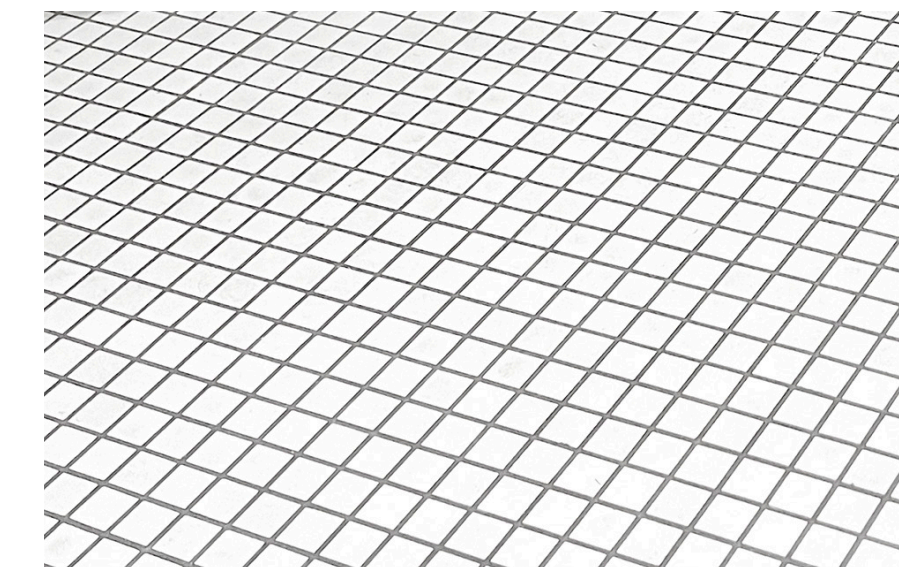
Automotive bays



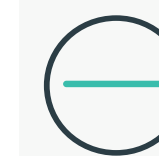
Food processing environments



Food processing environments



Small Ceramic Tile



Smooth Flooring  
Texture less than 1mm  
**SKU 200-S25**



Uneven Flooring  
Texture or grout lines over 1mm deep  
**SKU 200-S27**




# Common questions...

## I have both smooth and uneven floors in my building – which squeegee should I choose?

We recommend starting with the **Linatex Uneven Floor Squeegee**, as it delivers **superior drying performance on textured and grouted surfaces** while still providing effective results on smooth floors. However, on smoother, high-friction surfaces like vinyl or laminate, you may notice **increased drag**, which can make the machine slightly harder to manoeuvre.

If that becomes an issue, we suggest purchasing an **additional complete squeegee assembly** fitted with the **Smooth Floor Squeegee**. This setup allows you to easily swap between the two squeegees depending on the floor type, giving you the **best of both worlds** – optimal drying on uneven floors and effortless movement on smooth surfaces.





Complete Squeegee Assembly  
Smooth Floor Linatex  
SKU 002-S03



Complete Squeegee Assembly  
Uneven Floor Linatex  
SKU 002-S16





## How do I tell the squeegees apart?

Our four squeegee options are easy to differentiate through colour and clear labelling as explained below:

By colour:

- Blue: Primothane material
- Red: Linatex material

By flooring type:

-  Smooth floors
-  Uneven floors

## Why has my Squeegee gone wavy?

This is due to grease or oil swelling your Linatex Squeegee

If this happens, we recommend to start using Primothane Squeegees which are specifically designed for oil and grease.



Wavy Squeegee caused by grease or oil

# Common questions...

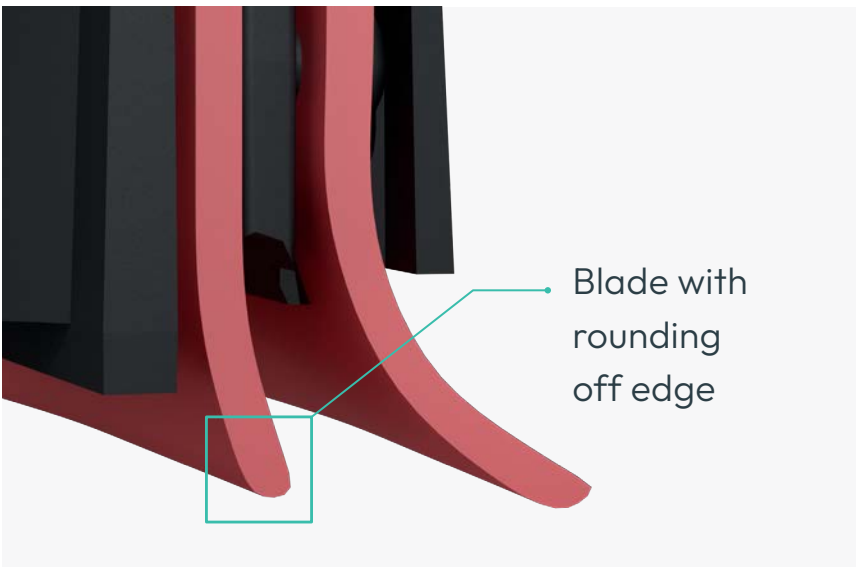
## When should I change my Squeegee?

Squeegees dry the floor best when they have a sharp edge as shown:

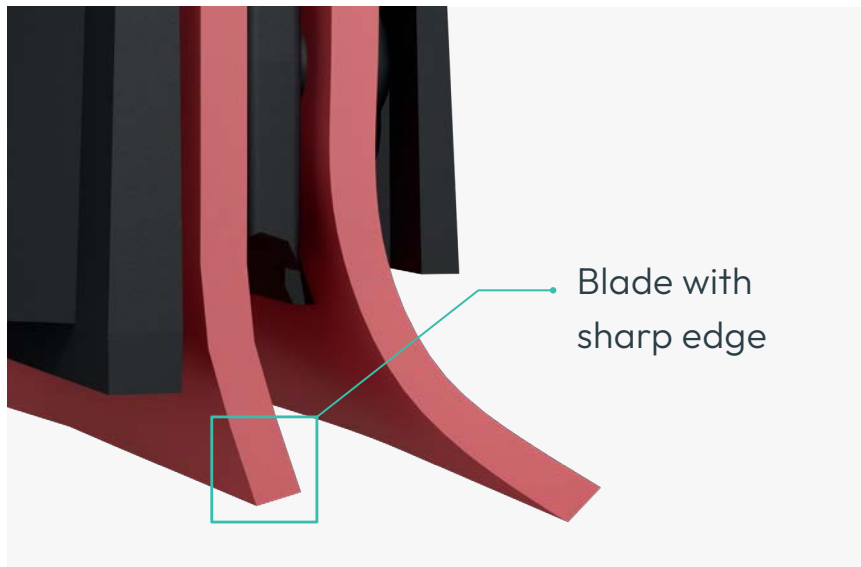
This sharp edge creates a high pressure point able to scrape the water from the surface into the central area where the vacuum can transport the fluid into the recovery tank.

Once the squeegee starts to wear and the edge is rounding off - **drying performance will reduce.**

Each squeegee blade is double sided - just flip it over for a fresh edge. Once **both sides have been used it is time to replace the squeegee blade** for a new one.



Squeegee with **rounding off edge**



Squeegee with **sharp edge**



## How long will a Squeegee blade last?

This will depend on:

- **What type of floor surface you are cleaning** (Smooth floors your squeegees will last longer, rough floors your squeegees will wear quicker)
- **How many hours per week it is used** (the more it is used the quicker your squeegees will wear)
- **The water level and chemicals you are using** (squeegees will last longer with more water)

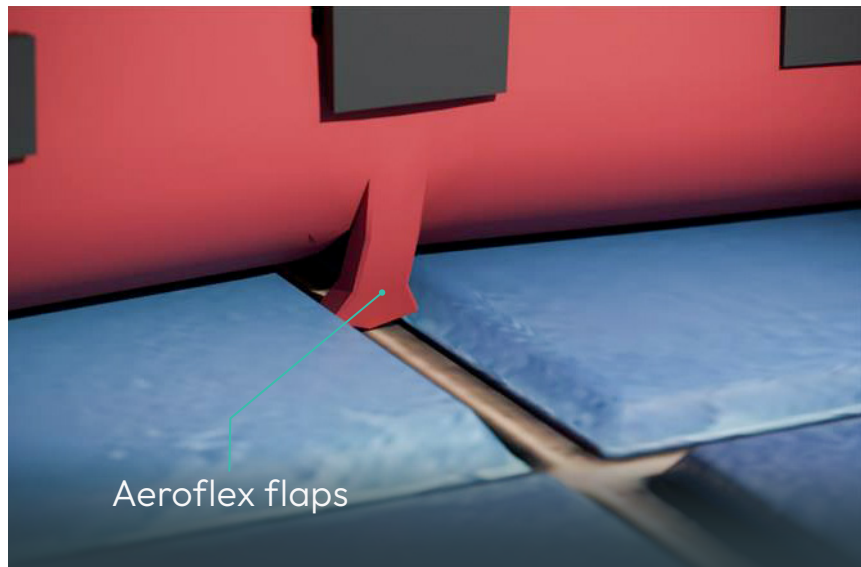
As a rough guide: If you have smooth floor surfaces and you use the machine for 1 hour per day, we would expect 1 set of squeegee blades to last approximately 6 months - **that's 3 months for each side.**

## What is Aeroflex?

Aeroflex is a patented Squeegee design with unique flexible flaps built into the front squeegee.

The special flap drops into grout lines, and seals off the water inlet. This **reduces suction loss** within the water channel and **increases air flow from the sides of the squeegee** to deliver superior drying performance, deep into texture and grout lines.

Important information: **Do not cut off Aeroflex flaps** - doing so will make the entire squeegee unusable.



Unique patented Aeroflex flaps



# Common questions...

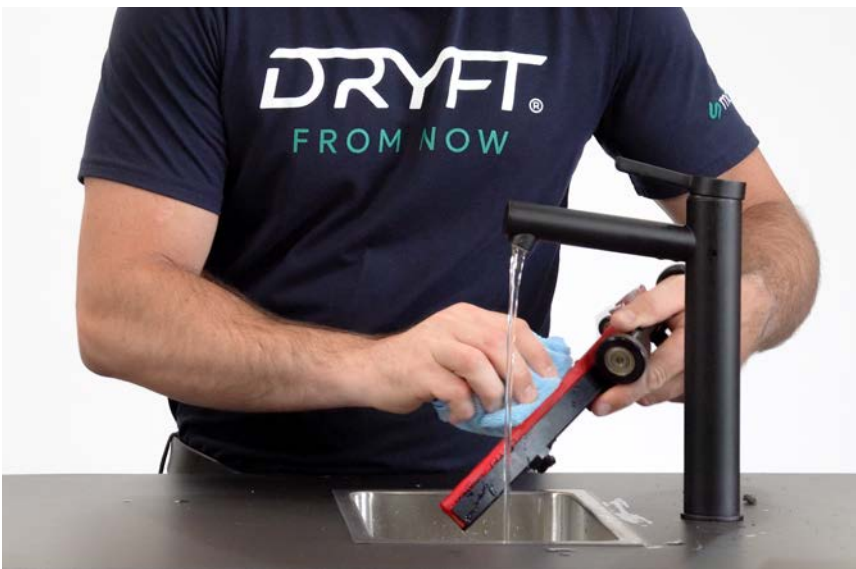
## My Squeegee is leaving wet lines on the floor?

This is normally caused by debris or hair caught underneath the rear squeegee.

Lift the machine into the transport position and wipe the squeegee with a cloth, **this normally needs doing multiple times throughout usage**, especially if you have not pre swept your floor before scrubbing.

Maintenance: It is important to **wipe the squeegee clean after each use**, and check the hose is clear to ensure top drying performance.

It is also important to keep the wheels clean and free from hair. If hair traps the wheel and stops them spinning, this can effect drying performance. **Cut away any hair after each use.**



Wipe the Squeegee clean after each use



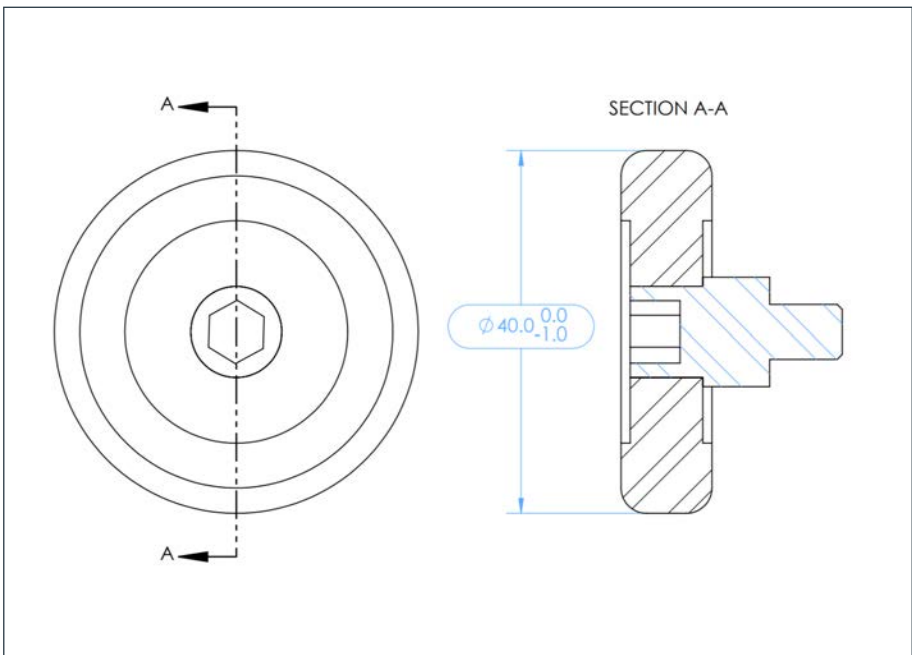
Cut away any hair after each use

## Squeegee wheels can wear over time.

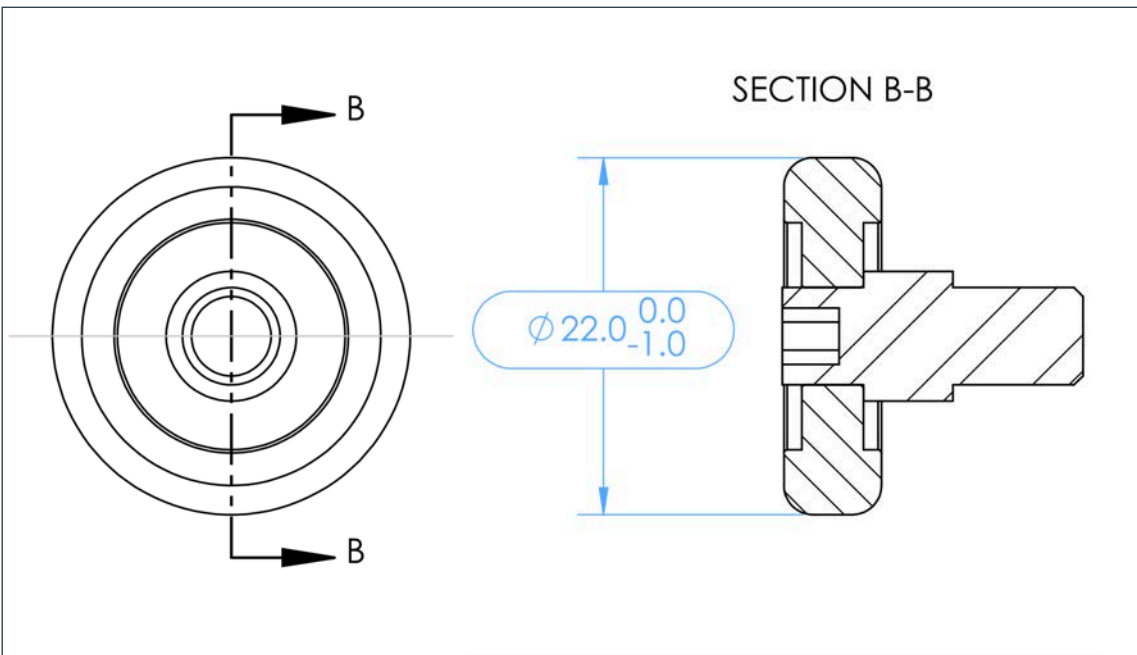
If the wheels wear in excess of 1mm in the total diameter this may start to effect drying performance. Squeegee wheels wear more quickly on rough surfaces.

The two **central rear wheels** should measure **40mm** in diameter. If they measure 39mm or less - they should be replaced.

The **outer wheels** measure **22mm** when new, if they measure 21mm or less - they should be replaced.



Central squeegee wheel diameter



Outer squeegee wheel diameter

## How to replace and maintain squeegees.

Keep your DRYFT at peak performance with our step-by-step guide to squeegee care - spot the signs of wear, learn safe replacement, extend lifespan with simple tips, and discover when to upgrade to our improved squeegee for flawless, consistent results.



Watch video