



MIRA 40

Battery Powered Multifunctional Auto Floor Scrubber Dryer

FREE
EXTRA BATTERY

**NOW
COMES WITH
2
BATTERIES**

**UP TO 8 HOURS
SCRUB TIME**

Model: VMIRA

THE MIRA 40 OFFERS COVERAGE
OF UP TO **3,250 SQM**, WHICH IS MORE
THAN DOUBLE IT'S CLOSEST COMPETITOR*

INCLEAN
INNOVATION AWARDS
WINNER **2019**



* Based on standard MIRA 40 with 2 batteries on LOW-SPEED MODE

CONTACT CLEANSTAR FOR YOUR NEAREST STOCKIST

(03) 9460 5655 sales@cleanstar.com.au cleanstar.com.au

FEATURES:

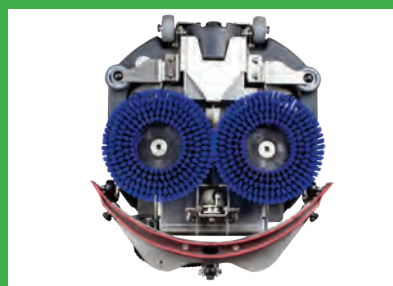
- **2 x 36V lithium batteries (13AH)**
- One battery required for operation
- **BONUS** battery included to increase working time
- Battery charger included
- Up to **1500** recharge cycles each
- **410mm** working width
- Up to **90 mins. working time** per battery at max. function
- Up to **4 hour run time** per battery when polishing on low speed
- Up to 4 hours **recharge** time
- **3-speed brush:** 145-175-220rpm
- **3L** clear water tank
- **5L** dirty water recovery tank
- **Float system** in recovery tank (with auto cut-off)
- Heavy duty **stainless steel** frame
- **36V** two-stage **8-speed** vacuum suction motor
- **Single** multi-function digital control panel
- **Usage Timer/Counter**
- Eco **energy saving** function
- Battery level **indicator**
- **Reversible** squeegee blades (4 edges)
- **Water consumption** 3 Litres
15 mins **@ MAX 100%**
30 mins **@ 50% Eco mode**
- Uses water or low foam detergent
- **SUITABLE FOR HARD FLOOR SURFACES**
- **Quick Reference User Guide** included in box

NEW FEATURES:

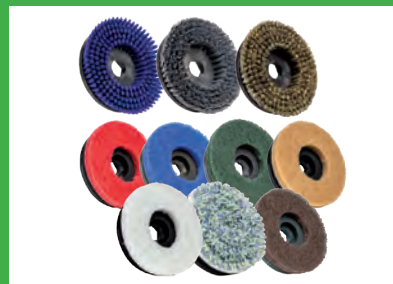
- Now comes with auto shut off float system, when recovery tank is full
- Improved handle support
- Improved squeegee locking system
- New adjustable rear squeegee wheel
- Long lasting aluminium drive bush
- Recovery tank sealing gasket upgraded to silicone
- Improved wiring in motor



FLOOR SQUEEGEE CAN BE RAISED WHEN NOT IN USE



**MEDIUM BLUE BRUSHES
30KG BRUSH PRESSURE**



RANGE OF BRUSHES & PADS AVAILABLE



**360 CONTROLLED
INCLINATION
STABLE IN VERTICAL
POSITION**



RELIABLE NATIONWIDE SERVICE NETWORK & PARTS BACKUP

MIRA 40

BATTERY POWERED SCRUBBER DRYER - PARTS & ACCESSORIES

ACCESSORIES



VMIRA-SPA0026 (#14)
Standard Blue Brush
General Cleaning
(included with machine)



VMIRA-SPA0026.TX (#14)
Hard Grey Tynex Brush
Heavy Duty Cleaning



VMIRA-SPA0026.P (#14)
Soft Brown Brush
Treated Surfaces, Wood
& Polishing



VMIRA-SPA0026.T (#14)
Pad Drive/Holder
Use with pads



VMIRA-TROLLEY
Transport Trolley



VMIRA-PAD0012
Red Pad (1pc)
Spray Shining



VMIRA-PAD0010
White Pad (1pc)
Finishing & Polishing



VMIRA-PAD0011
Beige Pad (1pc)
Polishing



VMIRA-PAD0015
Brown Pad (1pc)
Aggressive Clean



VMIRA-PAD0013
Blue Pad (1pc)
Light Cleaning



VMIRA-PAD0014
Green Pad (1pc)
Intermediate Cleaning

SPARE PARTS



VMIRA-KIT0054 (#57)
Lithium Battery Kit - 36v



VMIRA-COS0098
Battery Case



VMIRA-ELE0011 (#2)
Battery Plug



VMIRA-CRB0012 (#4)
Battery Charger



VMIRA-BOC0101 (#67)
Spacer Pivot Bush
Small Back Wheel



VMIRA-DAD0023 (#65)
Ring Nut for Small Back Wheel



VMIRA-ROT0029 (#79)
Front Wheel
D=50



VMIRA-ROT0030 (#66)
Small Wheel
D=30



VMIRA-TUB0018 (#94)
Water Hose



VMIRA-SER0020.F (#1)
Clean Water Tank



VMIRA-SER0022.B (#1)
Recovery Tank



VMIRA-MIN0021 (#6)
Shaft Key



VMIRA-KIT0064 (#10)
Vac Motor - 36v 2 Stage

Photo coming soon!

VMIRA-COS0050
Sticker for Membrane Control



VMIRA-GRP0120/R (#1)
Membrane Control

Photo coming soon!

VMIRA-GRP0120/R(OLD)
Membrane Control (OLD)

* Parts breakdown numbers referenced relate to relevant diagrams.

MIRA 40

BATTERY POWERED SCRUBBER DRYER - PARTS & ACCESSORIES

SPARE PARTS



VMIRA-TUB0022 (#3)
Vac Hose
Recovery tank hose



VMIRA-TUB0023 (#2)
Vacuum Suction Hose



VMIRA-ASS0134 (#13)
Recovery Tank Cap



VMIRA-CAB0037 (#4)
Engine Wiring



VMIRA-ASS0135 (#5)
Clean Water Cap



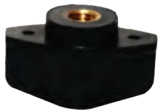
VMIRA-CAB0035 (#3)
Main Wiring



VMIRA-COM0065 (#8)
Elasting Rubber Couping



VMIRA-COM0067 (#18)
Knob SQG M6



VMIRA-COM0069 (#4)
Knob MOD 1065/F M6
1pc



VMIRA-COM0070 (#8)
Magnet



VMIRA-COM0072 (#22)
Hose Cap



VMIRA-COM0076 (#1)
3L Water Fit Bottle



VMIRA-COS0083 (#3)
Solution Cap Key



VMIRA-ELE0184 (#10)
Solenoid Valve
Complete



VMIRA-FIL0017
Clear Water Filter

May
come
in **Blue**
or **Red**



VMIRA-FIL0018 (#6)
Vac Filter



VMIRA-GUA0019
Gasket Kit



VMIRA-FIL0019
Main HEPA Vac Filter
(for VMIRA-HEPA)



VMIRA-FIL0020
HEPA Exhaust Filter
(for VMIRA-HEPA)



VMIRA-INN0018 (#5)
Brush Coupling O-Ring



VMIRA-KIT0059-X (#35)
Handle Support



VMIRA-KIT0060 (#4)
Tube with Curved



VMIRA-KIT0063
Kit Transport Wheel



VMIRA-KIT0057-X (#13)
Squeegee Body



VMIRA-KIT0055 (#12)
Front & Rear
Squeegee Blade
POLYURETHANE



VMIRA-KIT0056 (#12)
Front & Rear
Squeegee Blade
LYNATEX

SCREWS ALSO AVAILABLE

* Parts breakdown numbers referenced relate to relevant diagrams.

MIRA 40

BATTERY POWERED SCRUBBER DRYER - PARTS & ACCESSORIES

SPARE PARTS



VMIRA-KIT0079
Hook Assembly



VMIRA-KIT0089
Handle Lock



VMIRA-MIN0017 (#3)
O-Ring



VMIRA-MIN0018 (#7)
O-Ring



VMIRA-MOT0032 (#2)
Right Brush Motor



VMIRA-MOT0033 (#1)
Left Brush Motor



VMIRA-RAC0045 (#11)
"T" Raccord



VMIRA-PIA0172-X (#17)
Squeegee Front Metal
Blade



VMIRA-PIA0175-X (#8)
Rear Spring Blade
Squeegee



VMIRA-RAC0044 (#9)
Nipples M-M 1/4

Photo
coming
soon!

VMIRA-ROS0016
Washer
6.6 x 18 x 2

Photo
coming
soon!

VMIRA-ROS0031 (#51)
Washer
6.6 x 12 x 1

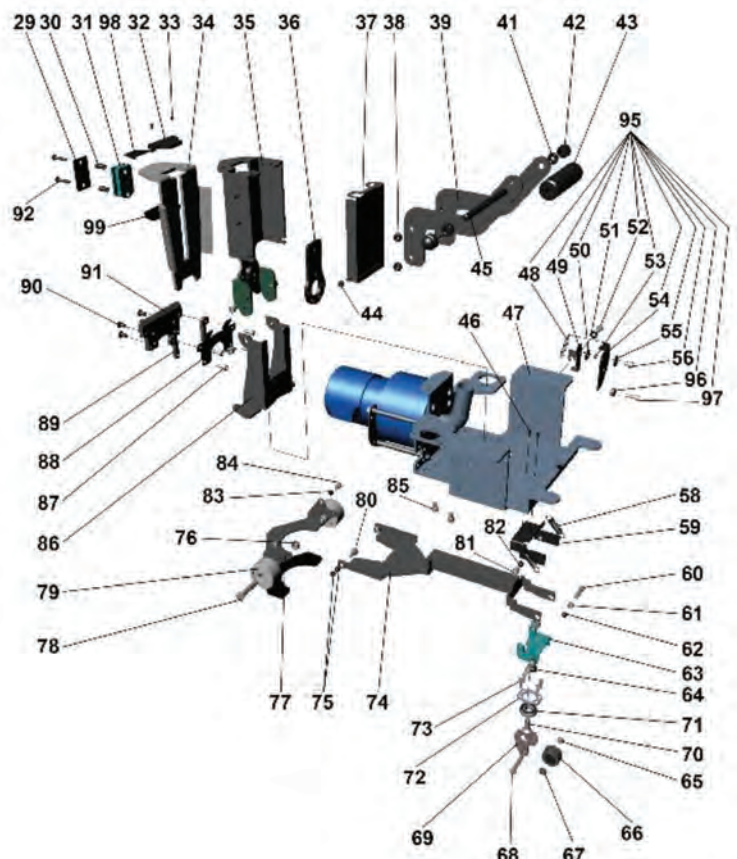
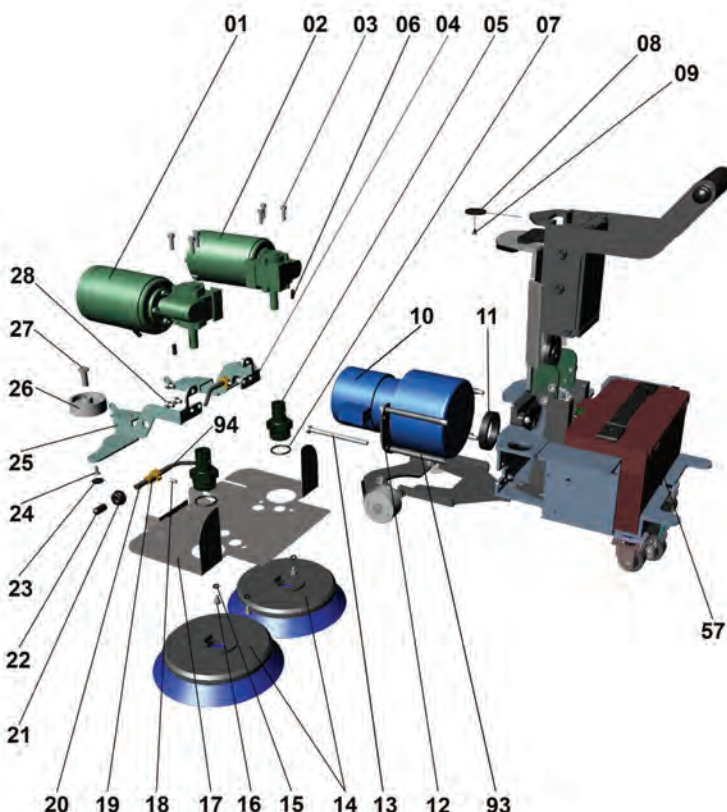


VMIRA-ROT0016 (#26)
Adjusting Wheel
Sqq 1pc



VMIRA-ROT0026 (#6)
Squeegee Small
Wheel

PARTS BREAKDOWN



* Parts breakdown numbers referenced relate to relevant diagrams.

MIRA 40

BATTERY POWERED SCRUBBER DRYER - PARTS & ACCESSORIES

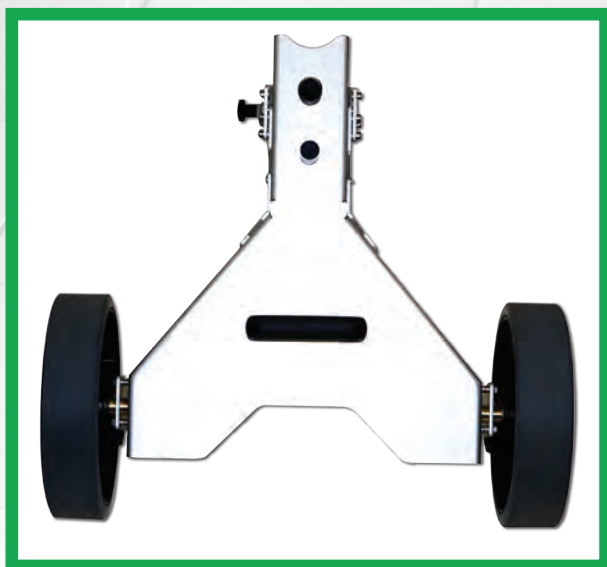
PARTS BREAKDOWN CONT'D



* Parts breakdown numbers referenced relate to relevant diagrams.

MIRA 40

TROLLEY FOR MIRA 40



Part No: VMIRA-TROLLEY

EASY TO TRANSPORT



CONTACT CLEANSTAR FOR YOUR NEAREST STOCKIST

☎ (03) 9460 5655

✉ sales@cleanstar.com.au

🌐 cleanstar.com.au



1. PLACE THE TWO BRUSHES ONTO BRUSH DRIVE (SIMPLY PUSH ON)



2. FIT SQUEEGEE ASSEMBLY WITH TWO WINGNUTS SUPPLIED



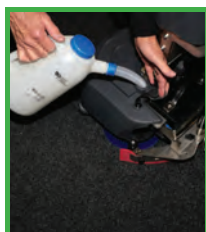
3. FIT SUCTION HOSE (FIRMLY) FROM BASE TO BODY OF MACHINE



4. STAND MACHINE UP IN VERTICAL POSITION



5. TILT MACHINE TO SIDE (OPPOSITE TO SOLUTION INLET) AND RAISE TROLLEY WHEELS



6. REMOVE INLET PLUG AND FILL SOLUTION TANK WITH CAN SUPPLIED



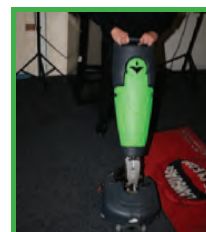
7. PLACE BATTERY INTO MACHINE



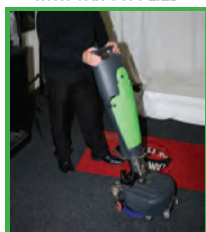
8. PRESS DOWN 'PUSH' TO LOWER SQUEEGEE ASSEMBLY



9. RAISE LOCKING SLIDE BEFORE TURNING MACHINE ON



10. MACHINE IS READY FOR USE



11. STAND BEHIND CONTROL PANEL



12. TO BEGIN SCRUBBING PROCESS, TURN POWER BUTTON ON



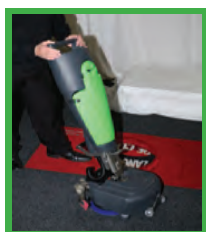
13. TURN VACUUM/SUCTION BUTTON ON



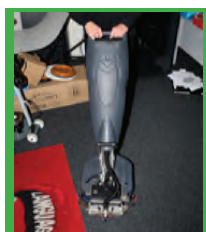
14. SELECT BRUSH SPEED CONTROL, 1, 2 OR 3



15. SELECT WATER FLOW 1, 2 OR 3



16. MAKE SURE MACHINE IS ALWAYS MOVING FORWARD, SQUEEGEE NEEDS TO FOLLOW BRUSH



17. IF YOU WANT TO BRING MACHINE BACK TO YOU, ROTATE HANDLE AND PULL TOWARD YOU.



18. WHEN JOB IS COMPLETE, PRESS RED OFF BUTTON



19. LIFT HANDLE TO UPRIGHT POSITION AND SECURE BY LOWERING THE LOCKING SLIDE



20. 'PULL UP' TO LIFT THE SQUEEGEE ASSEMBLY

GENERAL MAINTENANCE - AFTER EVERY USE



1. EMPTY THE SOLUTION TANK. BY USING SPANNER SUPPLIED. TURN ANTI CLOCKWISE TO UNSCREW, REMOVING PLUG AND FILTER



2. CLEAN THE FILTER AND REPLACE BACK INTO THE MACHINE FOLLOWED BY THE PLUG



3. EMPTY THE WASTE RECOVERY TANK BY RELEASING CLIPS ON EACH SIDE



4. TILT AND LIFT TANK ASSEMBLY OUT



5. REMOVE TOP FILTER, WASH & REPLACE



6. REMOVE DRAIN PLUG TO SAFELY RELEASE WASTE & RINSE TANK (WIPE AWAY ANY EXCESS GRIME)



7. CLEAN EXCESS GRIME IN HANDLE BODY, BEFORE REPLACING WASTE TANK (we recommend Cleanstar Microfibre Cloth)



8. OK TO STORE VERTICALLY



9. WHEN RED INDICATOR LEVEL ON BRUSH IS REACHED, IT NEEDS REPLACING

10. RECHARGE BATTERY AS PER INSTRUCTION MANUAL (REMOVE BATTERY TO RECHARGE)

11. CONTROL LIGHTS WILL FLASH WHEN RECOVERY TANK IS FULL & NEEDS TO BE EMPTIED