

PLEASE READ AND SAVE THESE INSTRUCTIONS



AIR SCRUBBER OWNER'S MANUAL

X-2480,X-3480,X-3780

X-3400, X-3700

XPOWER MANUFACTURE, INC.
240 Clary Avenue
San Gabriel, CA 91776, USA
Tel: 626-285-3301, Fax: 626-285-3302



SAA

Index

Introduction	2
Safety Instructions	3
Operation	4
Specifications	5
Parts List (ex. X-2480 and X-3400)	6~9
Additional Features	10
Filter Systems	11~12
Maintenance	13~17
Troubleshooting	18
Warranty/Service	19

Introduction

XPOWER's unique and highly innovative air scrubbers use the advanced technology filtration system that includes a washable outer round nylon mesh, an inner nylon mesh, pleated media filter, HEPA and activated carbon filters – you can be sure the XPOWER Air Scrubbers can contain ground-water contaminants that lead to environmental and human toxicity. The air filtration system captures a wide range of compounds and prevents organism migration from location to location.

Features:

- Advanced filtration technology: X-2480,X-3400 ,X-3480 with 3-stage filter system;
X-3780,X-3700 with 4-stage filter system.
- HEPA filter captures 99.9% of smaller particles down to 0.3-microns.
- Low amp usage with high airflow capacity 1020 M³/H.
- Easy cord wrap design.
- Filter change light illuminates when insufficient air passes through the HEPA filter.
- Stackable, compact, and lightweight design.
- 2 airflow positions – upright (vertical) or horizontal.

Safety Instructions

WARNING: IMPORTANT SAFETY PRECAUTIONS! PLEASE READ COMPLETELY BEFORE USING PRODUCT!

When using electrical appliances, basic safety precautions should always be followed to reduce the risk of fire, electric shock, and personal injury, including but not limited to the following:

1. To prevent electric shock, do not operate the unit in standing water. Never plug in or unplug the unit with wet hands or while standing in water.
2. To avoid risk of injury, do not direct air flow at face or body.
3. Do not operate any unit with a damaged cord or plug. Discard Air Scrubbers or return to an authorized service facility for examination and/or repair.
4. Air Scrubber is an automatically operated device. To reduce the risk of injury, disconnect from power supply before servicing.
5. Do not run cord under carpet. Do not cover cord with throw rugs, runners, or similar coverings. Do not route cord under furniture or appliances. Arrange cord away from traffic area and where it will not be tripped over.
6. Do not move or carry the Air Scrubber while unit is operating.
7. Keep air intakes and exhausts clean at all times. Avoid clogging or blocking to prevent the machine from overheating. Blocking the air intake could result in a fire or electrical hazards.
8. Always place the Air Scrubber on a smooth and level surface for safe operation.
9. Unplug the unit before performing any maintenance, cleaning, or servicing.
10. Any misuse or abuse of this product will void the warranty.
11. This appliance can be used by children aged from 8 years and above. Persons with reduced physical, sensory or mental capabilities or lack of experience and knowledge must be given supervision or instruction concerning use of the appliance in a safe way and understand the hazards involved.
12. Children should not play with the appliance.
13. Cleaning and user maintenance shall not be made by children without supervised.

Operation

In order to remove airborne particles from the surrounding environment, XPOWER Air Scrubbers are designed to draw air through a series of filters and deliver the purest air. Each filter stage operates with progressively higher efficiency. The unit removes airborne particles like hair, skin flakes, visible dust, mold spores, pollen, pet dander and miscellaneous debris.

1. XPOWER Air Scrubbers are shipped ready-to-use.
Prior to plugging the unit into the power source, inspect completely for any shipping damage.
2. Carefully place the Air Scrubbers upright on a stable, flat dry surface.
3. Plug the electrical cord into the power outlet.
4. The unit can be used in 2 different angle positions: vertical and horizontal.
5. Turn the control knob to desired speed and make sure the unit operates normally.
6. To reduce the risk of injury, close supervision is necessary when the machine is used near children. Do not allow children to play with, or around the Air Scrubber at any time.



Air Scrubbers Storage

Air Scrubbers can be stacked (up to 5) on their sides for storage. Stacking feature is not secure for transportation.

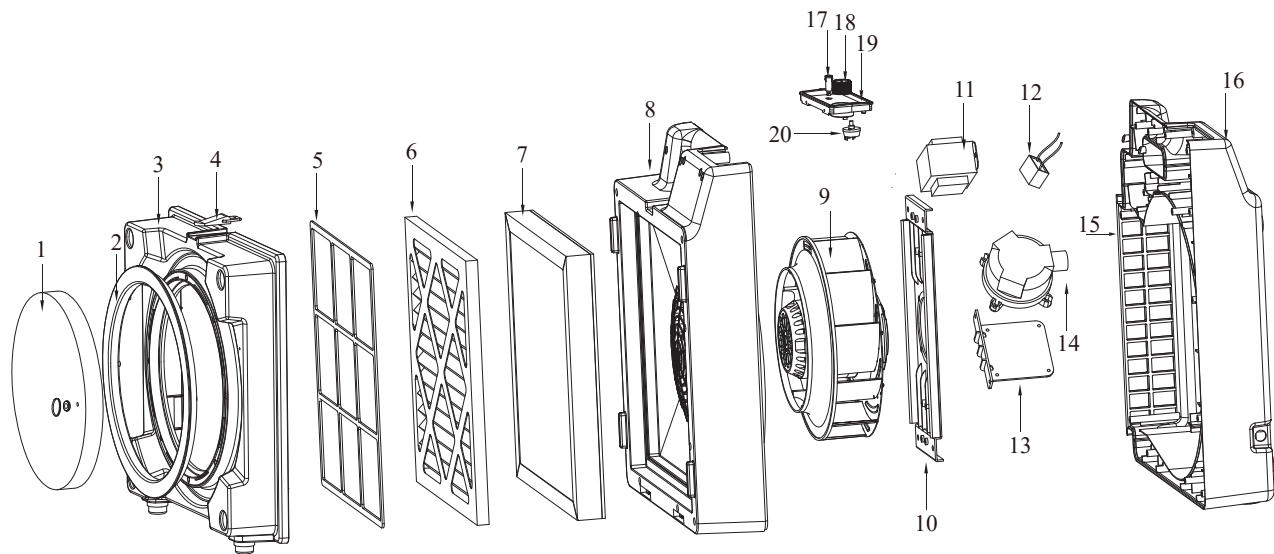
Specifications

Model	X-3400/X-3480	X-2480	X-3700/X-3780
Volt / Frequency	220-240V / 50Hz	220-240V / 50Hz	220-240V / 50Hz
Power	220W	220W	220W
Amp	1A	1A	1A
Rated Airflow (On High)	600 CFM	550 CFM	600 CFM
Speed	Variable Speed/5 Speeds	5 Speeds	Variable Speed/5 Speeds
Unit / Box Dimensions (L x W x H)	49.8 x 31.2 x 54.9cm/ 54.1 x 35.6 x 58.4cm	42.2x26.4x48 cm/ 47.5x31.5x 53.5cm	47 x 31.2 x 54.9cm / 54.1 x 35.6 x 58.4cm
Power Cord (Length/Size)	4m / 0.75 mm2	4m / 0.75 mm2	4m / 0.75 mm2
Housing	Injection-molded ABS	Injection-molded ABS	Injection-molded ABS
Filtration System	3-Stage	3-Stage	4-Stage
HEPA Efficiency	99.9% against 0.3-micron airborne particles		
Airflow Position	2 positions:Horizontal and Vertical		

Parts List (ex. X-2480)

Item No.	Parts Name	Item No.	Parts Name
1	Removable Air Inlet Foam Cap	2	Air Inlet
3	Inlet Panel	4	Latch
5	13"x13" Nylon Mesh Filter	6	Pleated Media Filter
7	1.4" Thick HEPA Filter	8	Front Housing
9	Motor	10	Motor Bracket
11	Transformer	12	Capacitor
13	Air Valve Bracket	14	Pressure Sensor/Switch
15	Air Outlet Grill	16	Rear Housing
17	HEPA Filter Clean/Change Light	18	Speed Control Knob
19	Control Panel	20	Switch

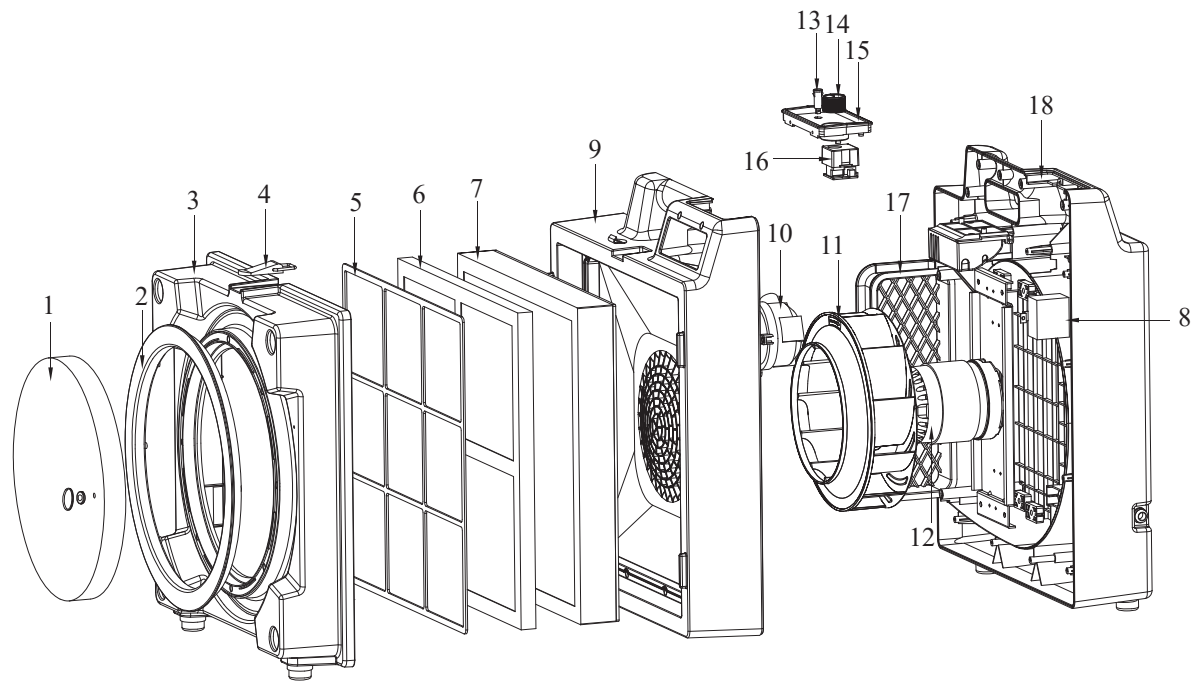
** Actual parts are not limited on this list, contact XPOWER or local distributor for ordering parts.



Parts List (ex. X-3400)

Item No.	Parts Name	Item No.	Parts Name
1	Removable Air Inlet Foam Cap	2	Air Inlet
3	Inlet Panel	4	Latch
5	16"x16" Nylon Mesh Filter	6	Pleated Media Filter
7	2" Thick HEPA Filter	8	Capacitor
9	Front Housing	10	Pressure Sensor/Switch
11	Fan	12	Motor
13	Filter Change Light	14	Speed Control Knob
15	Control Panel	16	Potentiometer
17	Air Outlet Grille	18	Rear Housing

** Actual parts are not limited on this list, contact XPOWER or local distributor for ordering parts.



Additional Features

Filter Clean/Change Indicator Light

The red Filter Clean/Change indicator Light will illuminate when accumulated debris is over-saturated, and filter needs to be cleaned. If the light is still illuminated after the filters are cleaned, the filter(s) possibly need to be replaced.



X-3400,X-3700 Switch Panel



X-2480,X-3480,X-3780 Switch Panel

Filter Systems



X-2480

3-STAGE FILTER SYSTEM

- 1st stage - Nylon Mesh Filter NFS13
- 2nd stage - Pleated Media Filter PF13
- 3rd stage - 1.4" Thick HEPA Filter HEPA35-33



X-3400/X-3480

3-STAGE FILTER SYSTEM

- 1st stage - Nylon Mesh Filter NFS16
- 2nd stage - Pleated Media Filter PF16
- 3rd stage - 2" Thick HEPA Filter HEPA50

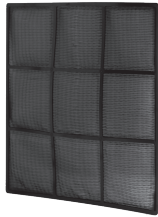


X-3700/X-3780

4-STAGE FILTER SYSTEM

- 1st stage - Nylon Mesh Filter NFS16
- 2nd stage - Pleated Media Filter PF16
- 3rd stage - Activated Carbon Filter CF35
- 4th stage - 2" Thick HEPA Filter HEPA50

Types of Filters



NFS16
16" x 16"
Nylon Mesh Filter



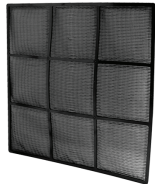
PF16
16" x 16"
Pleated Media Filter



CF35
16" x 16" x 1.4"
Activated Carbon Filter



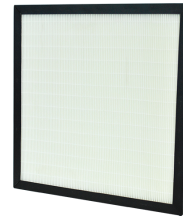
HEPA50
(2" Thick)
16" x 16"
HEPA Filter



NFS13
13" x 13"
Washable Inner
Nylon Mesh Filter



PF13
(13" x 13")
Pleated Media Filter



HEPA35-33
(13" x 13" x 1.4")
HEPA Filter

Maintenance

1. To keep the Air Scrubber clean, use a damp cloth to wipe the surface of the housing.
2. Never clean the Air Scrubber with water.
3. When not in use, unplug and store the Air Scrubber in a dry indoor place out of reach of children.
4. Always disconnect the Air Scrubber from its power source before performing any maintenance or cleaning.

Important: Filter Maintenance and Replacement

The XPOWER Air Scrubbers offer 3 models with different varieties of filter configuration to suit your particular air filtration requirements. To help prevent cross-contamination between jobs, limit your liability, and to optimize the performance of your air scrubber, you should perform a basic maintenance routine between every use: decontaminate the entire unit inside and out, and replace the entire filter system (both pre-filters and primary) before placing the unit on a new job.

Filters should be changed when they become so loaded with particles. The air scrubber begins to reduce airflow and increase pressure drop. Overly loaded filters not only restrict CFM, they can also result in a loss of filtration efficiency. XPOWER Air Scrubbers include on-board pressure sensors that automatically alert the Filter Change Light when the filters need changing.



Loaded Filter

Cleaning of Filters

NFS13 & NFS16 - Nylon Mesh Filters are washable. These filters will protect the inner filters from larger particles and therefore extend the life and usage of the primary HEPA filters. Always make sure the Air Scrubber is turned off before removing filters. Before cleaning, remove all the debris from the nylon mesh, rinse with water and lay filter flat on a clean and dry surface and let dry completely before re-installing.

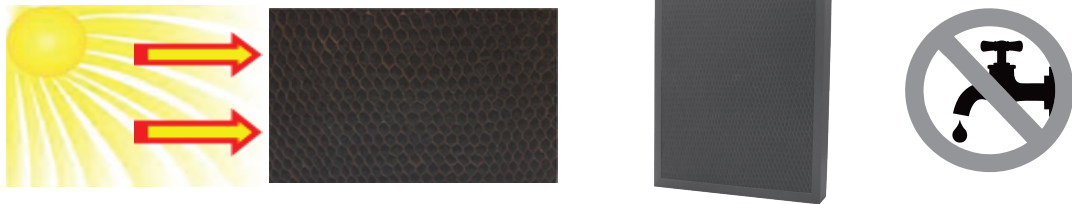
The NFS13 fits X-2480, the NFS16 fits X-3400, X-3480, X-3700, X-3780 Air Scrubbers.

PF13 & PF16 - Pleated Media Filter can be cleaned using a dry cloth or portable vacuum cleaner. Make sure the Air Scrubber is turned off before removing the filter. Apply gentle pressure when cleaning the surface of the filter to avoid breaking. Never use water when cleaning the PF16. If the filter is loaded with particles, it is advised to replace it with a new one.



HEPA35-33 & HEPA50 – HIGH EFFICIENCY PARTICULATE AIR FILTERS, also known as HEPA filters, ensure superior air quality inside our homes and protect us from a wide range of health risks associated with indoor air pollution. These filters are designed and implemented to trap even the tiniest contaminants (approximately 99.9% of all particles measuring 0.3 microns) that aren't usually captured by traditional air filters, in order to prevent allergies and other common respiratory problems. HEPA filters require a simple maintenance routine, which can be performed in a timely and cost-effective manner. To maximize HEPA filter life, be sure to change the pre-filter regularly. The Filter Change Light will light up when filters need attention. Always make sure that the Air Scrubber is turned off when removing the HEPA filters. Never use water to clean the HEPA filters. Use vacuum or clean cloth and lay it flat on a clean, dry surface. When putting the HEPA filter back into the machine, make sure the side with the gasket is facing the motor housing to prevent air leakage. HEPA35-33 fits X-2480; HEPA50 fits X-3400,X-3480, X-3700,X-3780.

CF35 - Activated Carbon Filters are used to remove contaminants and impurities through the process of chemical absorption. The CF35 captures a wide variety of volatile organic compounds that includes smoke, food odors, fumes from paint and paint thinners, sewer odors and more. Carbon Filters can be reused if the adsorbed substances are removed. This process is known as 'regeneration'. Simply heating the spent carbon at a given temperature for an adequate length of time can regenerate activated carbon to the point where it can be reused. The CF35 fits the X-3700 & X-3780 models; it is placed inside the housing in front of the HEPA filter. Always make sure that the Air Scrubber is turned off when removing the carbon filter. Never use water to clean the CF35 filters. Use vacuum or clean cloth and lay it flat on a clean and dry surface. For best results, put the CF35 under the sun and leave it there for a couple of hours. The capacity of the carbon filter will vary widely depending on conditions, but it should be replaced when a decline of effectiveness is noted.



Filter Replacement

The filters may need to be changed after certain period of time depending on your usage and the life of each type of filters.

Always wear a respirator and personal protective gear when removing or replacing filters. Lay the Air Scrubber flat, unlock top latch of the housing, open the inlet panel and remove filters.

Precautionary Measure When Cleaning and Changing Filters

An air scrubber captures particles that can be hazardous to human health. During the process of changing filters, decontamination, or performing maintenance, large concentrations of captured particles can become airborne in the immediate area. For these reasons, air scrubber operators should wear appropriate personal protection equipment (PPE) when performing any type of service on an air scrubber. A NIOSH-approved respirator is always essential for these tasks. If you've used the air scrubber for mold remediation or in another environment with known contaminants, you should also consider wearing gloves, eye protection and coverall



NIOSH-Approved
Respirator Mask

Disposal of Filters

The particles captured by a filter can cause adverse human health effects once they are released into the air. For this reason, you should dispose of used filters with care. You should place used filters in a plastic bag and seal the top before disposing. Always follow local regulations before disposing.

Troubleshooting

SYMPTOM	POSSIBLE CAUSE	ACTION
Motor not running	Switched off	Make sure unit is plugged in and switch is turned to ON mode
	Power failure	Check outlet/change to another outlet
	Wiring failure	Contact XPOWER for service/repair.
Scraping noise from fan	Obstruction at the intake or exhaust of fan	Remove obstruction
	Fan broken	Contact XPOWER for service/repair.
Weak air flow	Obstructed vents and/or filters	Clean out vents/inlets/filters
Change light illuminated	Insufficient airflow caused by clogged filters	Replace the filters

This marking indicates that this product should not be disposed with other household wastes. To prevent possible harm to the environment or human health from uncontrolled waste disposal, recycle it responsibly to promote the sustainable reuse of material resources. To return your used device, please use the return and collection systems or contact the retailer where the product was purchased. They can take this product for environmental safe recycling.



XPOWER LIMITED WARRANTY

XPOWER warrants this product to be free from defects in material and workmanship for a period of one (1) year from the date of original purchase.

The liability of XPOWER is limited solely to the cost of the repair or replacement of parts/the unit at XPOWER's discretion.

Important!

This warranty does not cover or apply to defects due directly or indirectly to misuse, abuse, disassembly, alteration, corrosive chemicals, improper voltage, fire, flood, negligence, accident, improperly or incorrectly performed maintenance or repair, or failure to perform necessary maintenance or repair, or if the use of this product is not in compliance with the instructions and specifications for its use.

The POWER CORD and filters are not covered by the warranty.

Service

Contact an XPOWER Distributor in your region for warranty service and parts replacement.