



**PROFESSIONAL AIR MOVER
OWNER'S MANUAL**

**X-400 / X-600AC / X-800C /
X-800HC**

XPOWER MANUFACTURE, INC.
220 Clary Avenue
San Gabriel, CA 91776, USA
Tel: 626-285-3301, Fax: 626-285-3302
www.xpower.ws

SAA



PLEASE READ AND SAVE THESE INSTRUCTIONS

Index

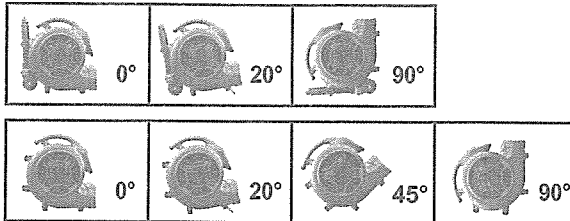
Introduction	2
Operation / Instructions.....	3
Safety Instructions.....	4
Specifications	5
Maintenance Instructions / Troubleshooting	6
Warranty / Service	7
Parts List	8
Accessories	11

Introduction

XPOWER Air Movers are SAA,C-TICK and CE Certified Professional Level Multifunctional Air Movers with the most efficient engineering design.

Features:

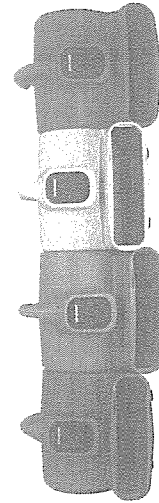
- Low power draw with an high velocity air flow from 1600 to 3200 CFM .
- 3-speed switch, super quiet motor and super lightweight.
- Easy carrying handle, easy cord wrap on handle and stackable up to 4 units high (3 units high for "H" series models).
- Easy and quick to disassemble for thorough cleaning and service.
- Easy cord wrap on handle.
- Luggage handle and wheels for "H" series models.
- Carpet clamp for "C" series models.
- 3 air flow positions for "H" series models (0°, 20° Kickstand, 90°).
- 4 positions for models without "H" (0°, 20°, 45°, 90°).



Operation / Instructions

XPOWER Air Movers are intended to move air and to dry floors, walls, furniture, etc. Durable and easy to operate with an effective balance of static pressure and airflow, the units are suitable for a variety of applications.

1. XPOWER Air Movers are shipped ready-to-use. Prior to plugging the unit into the power source, inspect completely for any shipping damage.
2. Plug the electrical cord into the power outlet.
3. Carefully place the Air Mover unit on a stable, flat dry surface.
4. Position your air mover in the desired angle to direct air flow. Models with an "H" are limited to 3 angles.
5. Turn the switch to desired speed, while monitoring that unit operates properly.
6. To reduce the risk of injury, close supervision is necessary when an appliance is used near children. Do not allow children to play with or around an Air Mover at any time.



Air mover storage:
Units without "H" can be stacked (up to 4) on their sides.
Units with "H" can be stacked (up to 3) on their sides.

NOTICE:

1. Stacking feature is not secure for transportation.
2. Remove filters before stacking.
(For unit with filters)

Safety Instructions

WARNING: IMPORTANT SAFETY PRECAUTIONS! PLEASE READ COMPLETELY BEFORE USING PRODUCT!

When using electrical appliances, basic safety precautions should always be followed to reduce the risk of fire, electric shock, and personal injury, including, but not limited to the following:

1. To prevent electric shock, do not operate the unit in standing water. Never plug in or unplug the unit with wet hands or while standing in water.
2. To avoid risk of injury, do not direct air flow at face or body.
3. To reduce the risk of fire or electric shock, do not use the Air Mover with any solid-state speed control device.
4. Do not run cord under carpeting. Do not cover cord with throw rugs, runners, or similar coverings. Do not route cord under furniture or appliances. Arrange cord away from traffic area and where it will not be tripped over.
5. If the supply cord is damaged, it must be replaced by the manufacturer or its service agent or a similarly qualified person in order to avoid a hazard.
6. This appliance can be used by children aged from 8 years and above persons with reduced physical, sensory or mental capabilities or lack of experience and knowledge if they have been given supervision or instruction concerning use of the appliance in a safe way and understand the hazards involved. Children should not play with the appliance.
7. Cleaning and user maintenance shall not be made by children without supervised.
8. The appliance is for indoor use only.

READ AND SAVE INSTRUCTIONS

Specifications

Model	X-400	X-600AC	X-800C	X-800HC
Volt/Frequenc	220-240V,50Hz	220-240V,50Hz	220-240V,50Hz	220-240V,50Hz
Power	350W	520W	700W	700W
Unit Weight	7.3kg	9.1kg	11.2kg	12.6kg
Unit	35.3x37.6x37cm	40.5x40x41.5cm	40.4x44.5x47cm	40.5x47.5x47.5cm
Cord Length	6.1m	7.6m	7.6m	7.6m
Overheating Protecting	Thermally Protected	Thermally Protected	Thermally Protected	Thermally Protected
Rated Airflow	1600 CFM	2400 CFM	3200 CFM	3200 CFM
Positions	4(0°, 20°, 45°, 90°)	4(0°, 20°, 45°, 90°)	4(0°, 20°, 45°, 90°)	3(0°, 20°, 90°)
Housing	ABS	ABS	ABS	ABS

Maintenance Instructions

1. To keep the air mover clean, use a damp cloth to wipe the surface of the housing.
2. Never clean the unit with water.
3. When not in use, unplug and store the air mover in a dry indoor place out of reach of children.
4. Always disconnect the air mover from its power source before performing any maintenance or cleaning.
5. Clean the filters (for unit with filters) as often as necessary to avoid loss of airflow.

This marking indicates that this product should not be disposed with other household wastes.

To prevent possible harm to the environment or human health from uncontrolled waste disposal, recycle it responsibly to promote the sustainable reuse of material resources. To return your used device, please use the return and collection systems or contact the retailer where the product was purchased. They can take this product for environmental safe recycling.



Troubleshooting

For any problems not listed below, call your local distributor or contact our Service Department.

PROBLEM	POSSIBLE CAUSE	SOLUTION
air mover not running	No power input	Plug in the air mover; check circuit breaker
	Switch not turned on	Turn on switch
	Unit fan jammed	Remove material jamming wheel
	Intake or exhaust blocked	Turn unit off and allow to cool, then remove blockage
air mover vibrates	Accumulation of dirt on fan blade	Clean air mover blade

XPOWER LIMITED WARRANTY

XPOWER Warranty covers the unit from defects in materials and craftsmanship. The Warranty covers normal use for a term of one year from the original date of purchase including parts, labor and one way shipping.

Important!

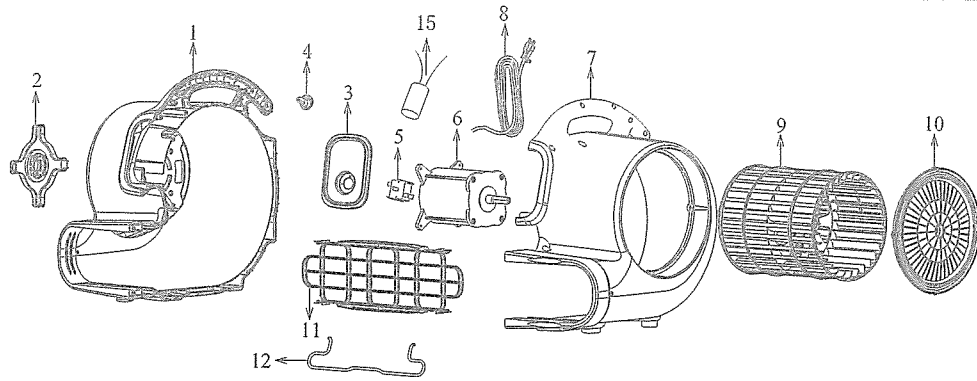
This Warranty does not cover signs of misuse including, but not limited to, a unit that has been dropped, subjected to water damage, tampered with, improper voltage use and unauthorized maintenance and repairs. The POWER CORD is not covered by the warranty.

Service

Contact an XPOWER Distributor in your region for Warranty service and parts replacement.

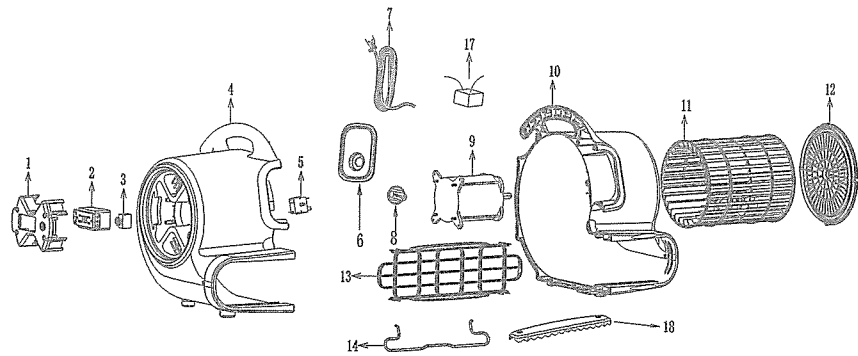
X-400 Series Parts list

Item No.	Parts Name	Item No.	Parts Name
1	Left Housing	2	Grid Cover (Motor Side)
3	Switch plate	4	Switch knob
5	Switch	6	Motor
7	Right Housing	8	Power Cord
9	Fan	10	Grid Cover (Fan Side)
11	Air Outlet Grid Cover	12	Kick Stand
13	Rubber Feet (Not Shown)	14	Screws and Nuts (Not Shown)
15	Capacitor		



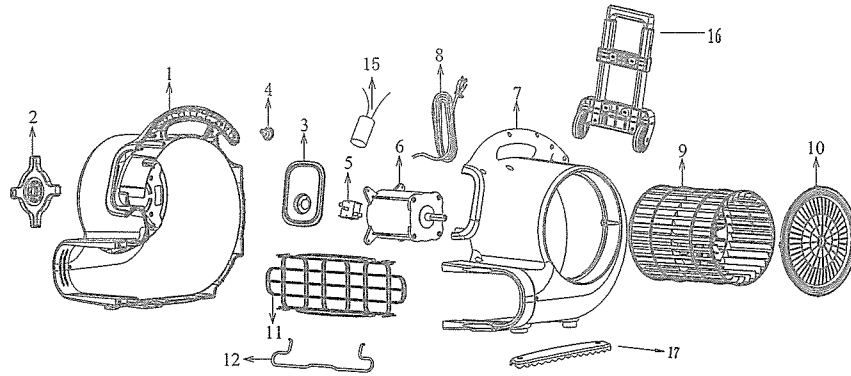
X-600AC Series Parts List

Item No.	Parts Name	Item No.	Parts Name
1	Grid Cover (Motor Side)	2	Receptacle
3	Overcurrent protector	4	Left Housing
5	Switch	6	Switch Plate
7	Power Cord	8	Switch Knob
9	Motor	10	Right Housing
11	Fan	12	Grid Cover (Fan Side)
13	Air Outlet Grid Cover	14	Kick Stand
15	Rubber Feet (Not Shown)	16	Screws and Nuts (Not Shown)
17	Capacitor	18	Carpet clamp

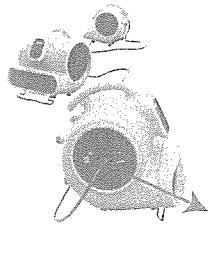


800 Series Parts list

Item No.	Parts Name	Item No.	Parts Name
1	Left Housing	2	Grid Cover (Motor Side)
3	Switch plate	4	Switch knob
5	Switch	6	Motor
7	Right Housing	8	Power Cord
9	Fan	10	Grid Cover (Fan Side)
11	Air Outlet Grid Cover	12	Kick Stand
13	Rubber Feet (Not Shown)	14	Screws and Nuts (Not Shown)
15	Capacitor	16 / 17	Luggage Handle/Carpet clamp



Accessories



Daisy Chain Specifications (applicable for model X-600AC)

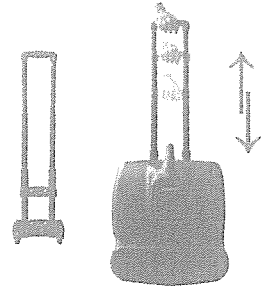
Air Mover Model X-600AC is daisy chainable with a low 2.2amp draw. The 10-amp on board circuit breaker will allow two (2) additional X-600AC units to run on one circuit at the same time. Total output: 2000W with this unit off ; 1400W with this unit on.

Note:

Air Mover has an on-board Circuit Breaker. If the Auxiliary Outlet overloads the Circuit Breaker will trip. If the Breaker does trip unplug the units and press the Circuit Breaker Reset button. Plug the units back into the power source and turn on the switch.

Luggage Handle & Wheels (for "H "series models)

"H "series models come with built-in adjustable luggage handle and wheels for easy transport and mobility.



Carpet clamp (for "C "series models)

"C" series models come with carpet clamp to clamp the carpet to dry.